

Rotary 2Rotor 4Coil 12V Map

Harness Required: E15 Ver 1.0 & E12 Ver 1.0

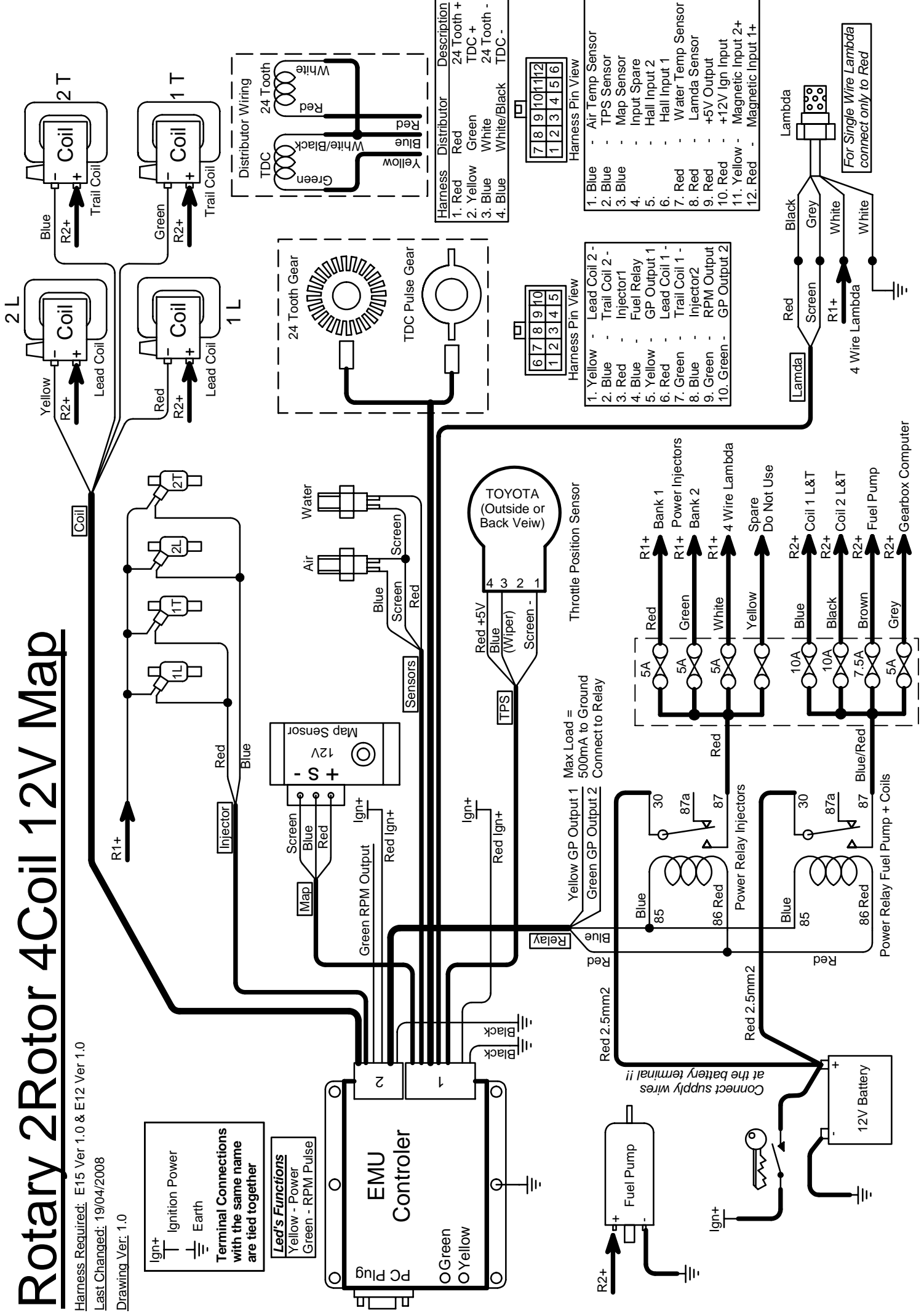
Last Changed: 19/04/2008

Drawing Ver: 1.0

Ign+ Ignition Power
Earth

Terminal Connections with the same name are tied together

Led's Functions
Yellow - Power
Green - RPM Pulse



Harness Distributor	Description
1. Red	24 Tooth + TDC +
2. Yellow	Green
3. Blue	White
4. Blue	White/Black TDC -

7	8	9	10	11	12
1	2	3	4	5	6

Harness Pin View

1. Blue	-	Air Temp Sensor
2. Blue	-	TPS Sensor
3. Blue	-	Map Sensor
4.	-	Input Spare
5.	-	Hall Input 2
6.	-	Hall Input 1
7. Red	-	Water Temp Sensor
8. Red	-	Lambda Sensor
9. Red	-	+5V Output
10. Red	-	+12V Ign Input
11. Yellow	-	Magnetic Input 2+
12. Red	-	Magnetic Input 1+

6	7	8	9	10
1	2	3	4	5

Harness Pin View

1. Yellow	-	Lead Coil 2 -
2. Blue	-	Trail Coil 2 -
3. Red	-	Injector1
4. Blue	-	Fuel Relay
5. Yellow	-	GP Output 1
6. Red	-	Lead Coil 1 -
7. Green	-	Trail Coil 1 -
8. Blue	-	Injector2
9. Green	-	RPM Output
10. Green	-	GP Output 2

For Single Wire Lambda connect only to Red

Connect supply wires at the battery terminal !!

Power Relay Fuel Pump + Coils

Max Load = 500mA to Ground Connect to Relay